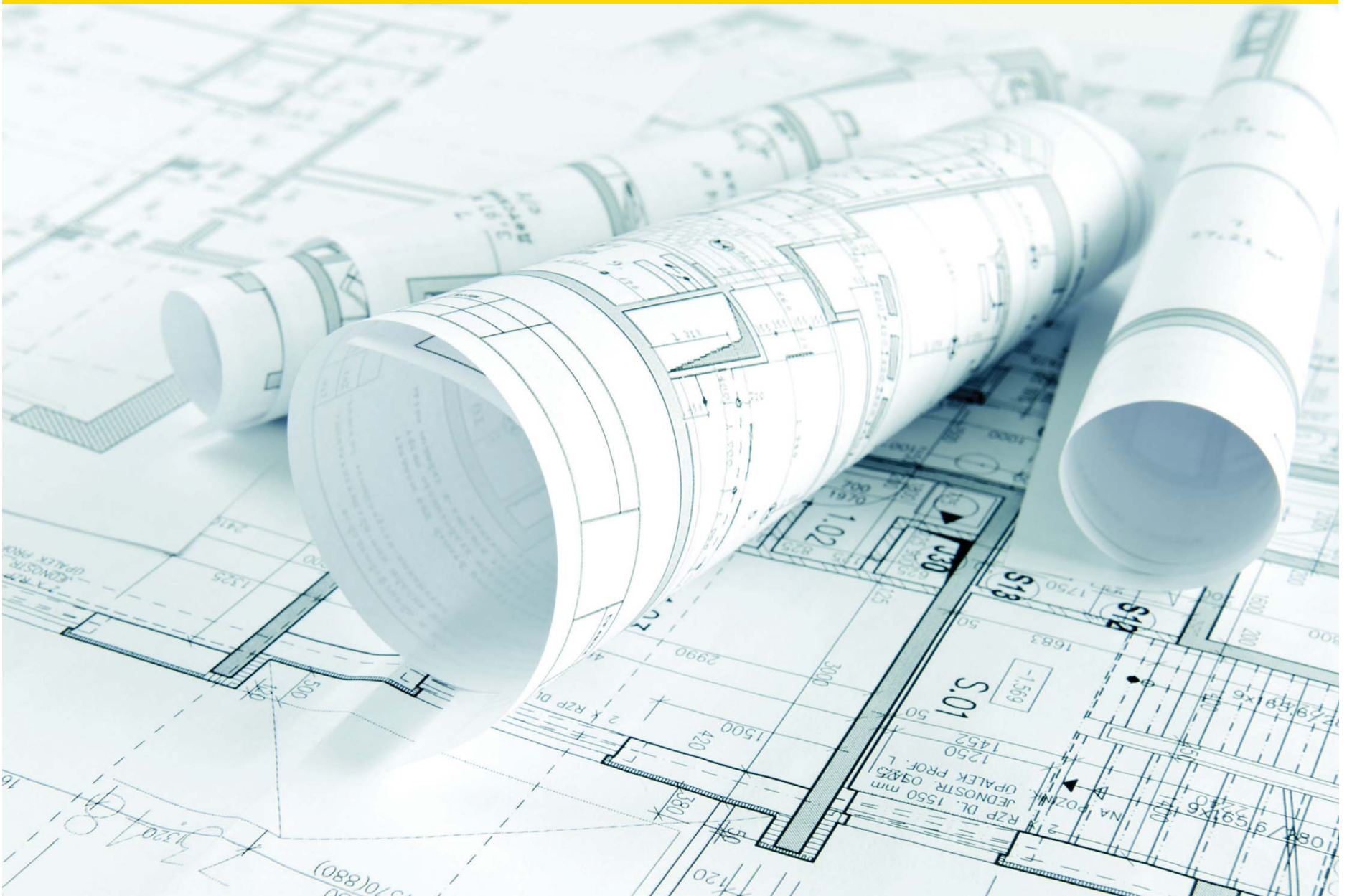


OUTSTANDING WOMEN IN CONSTRUCTION & DESIGN



WELCOME TO THE FIRST EDITION OF OUR NEW ANNUAL SPECIAL SUPPLEMENT HONORING LA'S MOST INFLUENTIAL WOMEN IN CONSTRUCTION AND DESIGN. According to labor force statistics, the share of women in the construction industry is currently only at nine percent, so the women who make their way to become standouts in that industry are truly pioneers. There's obviously a way to go for representation in building game, but the needle is moving. Female construction employment actually picked up to around 970,000 in 2017 nationally. Of course, Los Angeles is truly a national leader when it comes to influential women – and the fields of construction and design are no exception. There are some particularly stellar construction professionals in the LA region who happen to be women and we've alphabetically listed some of the best of them here, hand-selected by the *Los Angeles Business Journal's* Publisher and CEO, Anna Magzanyan, along with some basic information about their careers. Congratulations to the extraordinary, trailblazing women who made this list and thank you for your contributions to the Los Angeles economy ... and skyline!

WOMEN IN CONSTRUCTION & DESIGN



ANJANA BHOWMIK

Director of Operations, Strategic Markets
Oltmans Construction Co.

Anjana Bhowmik, LEED AP, has over 15 years of hard work, dedication, and leadership in the construction industry in her background. She joined Oltmans Construction Co.'s team in January of 2015. Her impressive educational background includes a Master of Science degree in Construction Management from Texas A&M University and a Bachelor of Architecture degree from the University of Madras, India. In addition, she is a LEED Accredited Professional and is an Associate DBIA. Her most recent achievements include her promotion as Oltmans Construction's Operations Director, Strategic Markets Group (SMG) in October 2018. SMG primarily focuses on providing the highest level of building services to the firm's healthcare and educational/institutional clients. Bhowmik, who previously served as Project Manager within the group for the last four years, was responsible for the management of notable healthcare and institutional projects such as Downtown West Medical, among other projects.



KASIE BOWDEN

Project Superintendent
Hensel Phelps

Throughout Kasie Bowden's 14-year career, she has spent over 12 years with Hensel Phelps. Her Civil Engineering degree from USC has led to her current leadership role as Project Superintendent, providing her with a well-rounded knowledge of what makes a project successful. A few of her contributory projects in the Los Angeles area include work done at Los Angeles International Airport (LAX), Martin Luther King, Jr. Medical Center, and Los Angeles Unified School District (LAUSD) community schools. On-site as well as off-site, Bowden is a driven leader. She is one of the founding members of Women in Construction Operations (WiOPS), an organization that is committed to the advancement of women in construction operation positions and the mentoring of future women leaders in this industry. As a successful woman in operations, a wife, and a mother, she will continue to uphold the responsibilities of being one of the most outstanding women in construction.



SARAH CARR

Vice President, Business Development
McCarthy Building Companies

As vice president in charge of business development for McCarthy Building Companies, Sarah Carr is focused on building strong relationships with clients and industry partners in the Southern California education market. Carr brings more than two decades of field and operations experience to her role, having held a variety of operations positions including vice president operations, project manager, assistant project manager, senior project engineer and project engineer. Over the course of her career, she has played a key role in more than \$1 billion in work in Southern California, including the \$615 million Hollywood & Highland Entertainment Retail Complex and \$238 million Huntington Beach Union High School District modernization and expansion. Committed to helping other women in the construction industry develop and succeed, Carr was co-founder of Women in Construction Operations (WiOPS) in 2013 and currently sits on the organization's National board of directors.



PRISCILLA CHAVEZ

Diversity & Inclusion Manager
PCL Construction

For Priscilla Chavez, the construction industry is more than just building. To her, it's about breaking outside the box and discovering unique ways of making a difference in local communities. As the manager of diversity and inclusion at PCL Construction, she oversees and manages community outreach, certified subcontractor relationships, workforce development, local government and labor relations as well as small business development. Chavez is a certified Master Compliance Administrator from Morgan State University and is recognized as the industry's leading compliance professional in Southern California. She works to go out and hear stories personally which gives her an opportunity to be serve as an advocate. Currently, Chavez serves as the president of the National Association of Women In Construction's Los Angeles Chapter. She is also a board member of the Los Angeles Trade Technical College Foundation, Women Business Enterprise Council and many other professional organizations.

Pankow

THINKING BEYOND THE BUILDING



LINDSEY GRAY

SENIOR PROJECT MANAGER



MARY LARKINS

SENIOR PROJECT MANAGER

CONGRATULATIONS

TO ALL OF THE 2019 TOP 20

MOST OUTSTANDING WOMEN IN CONSTRUCTION

We at Pankow Builders appreciate the leadership each of these women bring to the construction industry.



PANKOW.COM

WOMEN IN CONSTRUCTION & DESIGN



KELLI BERNARD
EVP & National Cities Leader, Los Angeles
AECOM

Kelli Bernard is chief executive for AECOM's business in the Los Angeles Metro area, where the global infrastructure firm is headquartered. Bernard has more than 20 years of experience in economic development, land-use planning, housing, redevelopment and public affairs. She is a commissioner for the Los Angeles Homeless Services Authority, an organization created in 1993 to address the challenges of homelessness in Los Angeles.

With more than 2,000 employees in the Los Angeles and Southern California area, Bernard is responsible for building on AECOM's strategies to deliver its integrated services to meet the infrastructure and business needs of public and private sector clients. Her extensive background in economic development and deep relationships in the Southern California region are valuable assets as AECOM looks to enhance its market presence. She has more than 20 years of experience in economic development, land use planning, housing, redevelopment and public affairs. She also has in-depth knowledge of public/private partnerships, public finance and infrastructure investment.

Prior to joining AECOM, Bernard served as the deputy mayor of economic development for Los Angeles Mayor Eric Garcetti, where she led the charge to raise the minimum wage in the City of Los Angeles. Before her role as deputy mayor, she served as the director of economic development at the Los Angeles Department of Water and Power, the largest municipality in the United States, where she led the department's Clean Technology Initiative that culminated in the development of the \$40 million La Kretz Innovation Campus. Earlier in her career, she worked as director of planning and economic development for Mayor Garcetti when he served as president of the Los Angeles City Council. In this role, she oversaw key development activities, including the \$110 million Emerson College and the \$390 million mixed-used Columbia Square projects.



On behalf of the entire team at
Turner Construction Company...

Congratulations, Michelle Ballard!

We thank you for your dedication to advancing
the industry and your leadership in increasing
opportunities for the communities we serve.

Turner Construction Company would like to congratulate
all of the Outstanding Women in Construction and Design.
Your leadership, commitment, and vision are instrumental
in building the future of Los Angeles.

Turner

www.turnerconstruction.com

WOMEN IN CONSTRUCTION & DESIGN



CLARE DE BRIERE

Executive Vice President
Skanska USA Commercial Development

Claire De Briere is a native Angeleno and has spent her career creating special places for the citizens and visitors of Los Angeles. In 2018, she joined Skanska's Commercial Development Business as an executive vice president. In this role, she leads the team exploring opportunities to expand Skanska's real estate development business into Los Angeles. She is responsible for land acquisition, the development and design of new projects, tenant leasing strategy and construction execution of future projects in Los Angeles. De Briere is an active member of the Urban Land Institute serving on the America's Executive Committee, as a Global Trustee, as the Los Angeles District Council Chair, on the national Advisory Committee for Building Healthy Places and Building Healthy Corridors. She has served on a ULI Advisory Panel in the City of Denver and on a local Technical Assistance Panels for the Huntington Hospital and Cal Poly Pomona.



WHITNEY DORN

Project Executive
DPR Construction

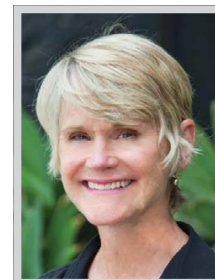
With over 25 years of experience, Whitney Dorn is a “DPR lifer” joining DPR right after graduating from Cal Poly San Luis Obispo. She spent the first 15 years of her career in operations. In 2008, she began leading DPR’s sustainability initiative to help customers develop and implement the best strategies through experienced people, a collaborative methodology, and custom tools to address the triple bottom line: environmental, social and economic. After five years of educating customers and DPR teams about building sustainable structures, Dorn transitioned back to an operations role as a project executive. She has since worked on notable projects, including a wireless phone company’s headquarters, Torrey Pines Science Park and a 73-acre corporate campus project in Irvine, and is currently working on a new hotel development project in Oceanside. Since 2003, she has been mentoring youths through the San Diego ACE Mentor program, and in 2018 took over as chairwoman for the chapter.



BARBARA DUNN

Principal & Studio Director
Gensler

Barbara Dunn is a Principal and Studio Director in Gensler's Los Angeles office. For more than 30 years, she has created innovative environments for well-known clients worldwide, making her a sought-after resource and speaker at design and legal industry conferences. Dunn is one of an elite few designers recognized as a Fellow of the College of Law Practice Management and Fellow of the International Interior Design Association. She recently received the IIDA Circle of Excellence honor for her dedication to leadership and excellence in interior design. In addition to actively mentoring next-generation talent, she is an Advisory Board Member for the Southern California Chapter of CoreNet Global, and past President of the IIDA Board of Directors. Dunn is a longtime member and past president of the Board of Trustees for the Santa Monica Museum of Art, and is now a Lifetime Trustee of the Institute of Contemporary Art Los Angeles. She holds a Bachelor of Fine Arts from Washington University.



BARBARA FLAMMANG

Managing Partner
KFA Architecture

Barbara Flammang, AIA has been a partner at KFA Architecture for over 40 years, and is proud to have contributed to the fabric of this great city. KFA reshapes LA by designing great places where people flourish. She and the firm provide design and master planning services for projects throughout the greater Los Angeles metropolitan area using a collaborative approach for each project. In the late 1990's, Flammang and KFA helped to spark the resurgence of the historic core in downtown Los Angeles. KFA designed the first three buildings under LA's Adaptive Reuse Ordinance in the Old Bank District, and has since rehabilitated over 40 historic buildings throughout the City. Flammang is currently overseeing the development of the Los Angeles LGBT Center's Anita May Rosenstein Campus, which is scheduled to open in April. Flammang is a member of the Association for Women in Architecture + Design and a past board member of the Los Angeles Conservancy and the Santa Monica Westside YWCA.



GREAT PEOPLE make for
a **GREAT COMPANY**

Congratulations to our very own **Ashley Kelly** on being named one of Los Angeles Business Journal's Most Outstanding Women in Construction!



WOMEN IN CONSTRUCTION & DESIGN



DEBORAH FLINT

CEO
LAWA

Deborah Flint was appointed Chief Executive Officer of Los Angeles World Airports (LAWA) in June 2015, with oversight of Los Angeles International (LAX) and Van Nuys (VNY) general aviation airports. Flint leads the team responsible for returning LAX to iconic status, creating a world class, modern airport for the modern traveler and building a transportation system that will give passengers a first-class, swift, convenient, and reliable way to access the airport.

Flint’s responsibilities involve managing the largest public works project in the history of the City of Los Angeles and investing more than \$8.5-billion to innovate retail, food and beverage, terminal redevelopment and create an airport wide hospitality mindset. As well, Flint oversees the development and advancement of security policies and strategies that comply with federal security regulations and provide world-class law enforcement for the protection of the public and property. She leads the procurement and delivery of the Landside Access Modernization Program (LAMP,) the \$5.5 billion solution to the crowded roadways and curbsides at and around LAX. Elements include an Automated People Mover (APM), Consolidated Rent-a-Car Center (ConRAC), Intermodal Transportation Facilities (ITFs) and comprehensive Roadway Improvements. Working in partnership with the Los Angeles County Metropolitan Transportation Authority (Metro), the system will provide travelers with a seamless connection to public transit. Flint is committed to building the complex structures with leading edge innovation and design, while creating new jobs and opportunities for small, local and diverse business.

Flint managed the transition of Ontario International Airport (ONT) to its new local authority. She continues to position VNY, one of the world’s busiest general aviation airports, as a vital community partner, which contributes more than \$1.3 billion each year to the Southern California economy. Flint came to LAWA from the Port of Oakland where she had held the position of aviation director since 2010, being the primary executive responsible management, business development and operation of Oakland International Airport (OAK).

EMPOWERING
WOMEN IN CONSTRUCTION.



Congratulations to Lia Tatevosian, Vice President, Special Projects Division Manager, for being selected as one of the Most Outstanding Women in Construction!



WOMEN IN CONSTRUCTION & DESIGN



KIM GRANT

Project Executive
Hathaway Dinwiddie

Kim Grant is a Project Executive at Hathaway Dinwiddie who has spent over 37 years working in the construction industry. She graduated from the USC School of Engineering with a Civil Engineering degree and is a licensed CA Professional Engineer. She is also LEED AP and DBIA Certified. She has worked in design and construction in several markets including, commercial building, non-profits, aviation and education. She has collaborated with owners and designers from preconstruction through project closeout. Her passion for developing high performing teams has led her to communications skills training and working as an Industry Advisor for Cal Poly Pomona and Industry Liaison on the Executive Board for the USC Construction Alumni Group.



LINDSEY GRAY

Senior Project Manager
Pankow Builders

Lindsey Gray graduated with a BS in Construction Engineering Management from Purdue University and has worked with Pankow Builders since graduation 14 years ago. During her Pankow career, Gray has successfully led Design-Build projects for LACCD's Valley College Community Services Center, 24,000 sf new building, LEED Gold and Valley Glen Gateway Building and Omega Data Center, 70,000 sf new construction, LEED Silver Certification. She was able to contribute her sustainability knowledge as a LEED Accredited Professional. She has been instrumental in planning, management and execution of various other construction projects including the California Highway Patrol, Los Angeles World Airports, as well as several private condominium and apartment developments. She is a certified Design-Build Professional with the class of 2017. Gray continues to expand, master and share her knowledge of Design-Build – in 2016 she was selected to speak at the DBIA National Conference in Las Vegas.



SANDRA GUTIERREZ

Director of Corporate Operations
Millie and Severson

Sandra Gutierrez has been a part of the Millie and Severson team since 1996. She has made significant contributions to the efficiencies of operations for the company by having participated in a variety of department cross functions such as accounting, subcontracting, project delivery, contract administration, IT and operations. Aside from maximizing efficiency, she has improved company profitability by directing and coordinating financial and budget processes. Her tireless efforts are reflected in our established and proven company procedures and policies.



HELENA JUBANY

Principal
NAC architecture

Helena Jubany is the Managing Principal of the Los Angeles office of NAC Architecture. Throughout her career of over 30 years, she has advanced her practice by developing a collaborative and inclusive process that promoted diversity and advocated for outstanding design with a focus on educational facilities. Jubany was elevated to the College of the Fellows of The American Institute of Architects in 2013 for her contribution in advancing architectural practice by creating opportunities to empower minority and women architects, exemplifying the leadership position of the architect in the public realm, and elevating the architect's role in the community. Jubany served as President for the local chapter of the Association for Learning Environments in 2018, Past Chair of the Board of A Community of Friends (ACOF), a non-profit organization focused in providing permanent supportive housing for homeless people with mental illness. She is also Chair of the Design Control Board for Marina del Rey.



LOS ANGELES BUSINESS JOURNAL
COMMERCIAL
REAL ESTATE
AWARDS

The Los Angeles Business Journal
is proud to announce the 24th annual
Commercial Real Estate Awards.

We invite you to join us as we recognize the biggest, best, and most notable commercial real estate projects of 2018. We'll be honoring the **developer**, **architect** and **general contractor** of each award winning project, as well as the most successful **broker/broker teams** in the market!

NOMINATION DEADLINE

Thursday, January 17, 2019

AWARDS DINNER Monday, February 25, 2019

Westin Bonaventure Hotel and Suites | 404 S. Figueroa Street, Los Angeles, CA 90071 | 5:00PM - 9:30PM

To nominate or register to attend, visit www.labusinessjournal.com/bizevents

PLATINUM SPONSOR

CBRE

SILVER SPONSOR

Colliers International

For sponsorship opportunities, please call (323) 549-5225.

WOMEN IN CONSTRUCTION & DESIGN



SHEILA KUEHL

Board Chair
Metro

Last year, Los Angeles County Supervisor Sheila Kuehl has become the new Chair of the Los Angeles County Metropolitan Transportation Authority (Metro) Board of Directors. She succeeded outgoing Board Chair Los Angeles Mayor Eric Garcetti. Last July, when named to the post, Kuehl said, “We have a great number of truly exciting projects and initiatives coming to fruition and I look forward to continuing our focus on our riders and employees, especially regarding the ways in which our programs impact women, who have their own unique experiences and concerns.”

Today, Kuehl continues to work with the Board and Metro CEO Phil Washington on improving the experience of those riding the Metro system. In addition, she plans on working with Metro’s Women and Girls Council to focus on training and hiring more women in non-traditional career positions. She also plays a key role in Metro’s ongoing NextGen Bus Study, which seeks to restructure and reimagine the Metro bus system to be more relevant, reflective of and attractive to the residents of Los Angeles County. The redesigned bus service network will dramatically improve service. Buses carry about 70 percent of Metro’s riders.

As Chair of the Board of Supervisors, Kuehl has also undertaken or collaborated in a number of initiatives and motions to improve the quality of life and reform systems in the County, including providing unprecedented funding and services for our homeless population and those trying to find and keep affordable housing, innovating on issues of water conservation and recycling, creating a County-led Community Choice Aggregation (CCA) JPA to bring green power choices to County residents, spurring the construction and re-opening of the John Anson Ford Theatres, opening Campus Kilpatrick, a state-of-the-art juvenile justice facility that emphasizes rehabilitation and preparation for a constructive future, and much more.

A collage of four photographs of women in construction or industrial settings. Top left: A woman in a green shirt and orange safety vest. Top right: A woman in a yellow safety vest. Bottom left: A pregnant woman in a white shirt and yellow safety vest. Bottom right: A woman in an orange safety jacket. The text 'Celebrating WOMEN who BUILD' is overlaid in large white letters.

“I know others are looking at me to see how I deal with situations, particularly the younger women. It’s very important to me to set a good example, and give them the confidence that this is a great career, something that they can do and make work for their lives.”

- Whitney Dorn,
Project Executive,
DPR Construction

A full-length photo of Whitney Dorn, a woman with blonde hair, wearing a white hard hat, an orange safety vest over a grey sweater, and a lanyard. She is standing outdoors in front of a modern building.

At DPR, we celebrate women who build by sharing stories of empowered women. These female leaders are successfully executing complex, technical projects for some of the world’s most progressive and admired companies. The goal is simple:

Connect, inspire, develop and advance women.



WOMEN IN CONSTRUCTION & DESIGN



ASHLEY KELLY
Senior Project Manager
Clark Construction

Ashley Kelly is a Senior Project Manager and part of the high-performing team responsible for construction operations on the Long Beach Civic Center, the largest public-private development of its kind on the West Coast. She joined Clark Construction as an Estimator in 2011 and has assumed roles of increasing responsibility during her tenure. In addition to her work on the Long Beach Civic Center, she has played a key role in supporting Clark’s operations on other complex projects throughout Southern California, including the Gov. George Deukmejian Courthouse, The Forum renovation, and the LAX Tom Bradley International Terminal Apron Demolition and Renovation. Kelly holds a bachelor’s degree in Civil/Structural Engineering and a master’s in Construction Engineering and Management from the University of Southern California. She is an active member of the Design-Build Institute of America’s Young Professional Committee and is also a LEED Accredited Professional.



MARY LARKINS
Senior Project Manager
Pankow Builders

Mary Larkins, Pankow Builders’ Senior Project Manager, has consistently demonstrated throughout her career a natural ability to lead project teams. Clients, trade partners, and project teams all benefit from her 36+ years of experience in the construction industry and her easy-going attitude. She demonstrates her leadership ability by establishing clear lines of communication with clients, staff, and trade partners, all of whom she has maintained successful relationships with well beyond the completion of her projects. Clients place their trust in her because she is an empathetic listener and strives to understand owners’ goals and expectations. By doing so, she sets systems in place to ensure that there is good, consistent communication with clients to avoid surprises. She takes on her projects as if she was building it for herself, ensuring their expectations are met every step of the way. Clients appreciate their trusting relationship with her when a concern or request is made; she responds with understanding and urgency.



NATALINE LOMEDICO
CEO
Giroux Glass

In 2015, Nataline Lomedico became CEO and president of Giroux Glass, Inc., a WBE-certified glass, glazing and architectural metals contracting company. In operation since 1946, the 100% ESOP employee-owned company is recognized as one of the nation’s top glazing contractors and is perhaps best known for its installation of the SkyWalk over the Grand Canyon. Lomedico has been consistently integral to the company’s financial strategies in each of her previous roles as treasurer, controller and most recently, as CFO. Since 2002, she has been responsible for all financial aspects of the company, including financial and risk management operations. She has played a pivotal role in the success and growth of Giroux Glass, as an inspirational leader and as the driving force behind the company’s transition to full employee-ownership. Prior to Giroux Glass, she worked in the construction industry in finance and accounting roles for over 24 years, mostly within executive management roles.



HEATHER NIELSEN
Project Manager
Webcor

“Design, create, build the things we use, live in, and drive on every day,” were the words that a professor at College of the Desert first used to inspire Heather Nielsen to seriously pursue engineering as a profession. Shortly thereafter, the single mother of three boys transferred to Cal Poly Pomona to study mechanical engineering, and took her first job in the industry. She then changed her major to civil engineering with an emphasis in structures. Nielsen soon got to build the structures she so admired [bridges], during her next few years as a Project Engineer, then as a Superintendent at Kiewit. She built several bridges over the 405 Freeway and even spent a year in Hawaii building the station piers for the Honolulu light rail. In 2015, she was named Assistant Project Manager at Oceanwide Plaza with Webcor Concrete Group’s Southern California division. Since then, she’s been promoted to Project Manager and is leading Webcor’s self-perform concrete team at the Four Seasons Private Residences at Los Angeles.



INSPIRING POSSIBILITIES

In celebrating more than 100 years as the Builder of Choice for Certainty of Delivery, **Hathaway Dinwiddie Construction Company** takes pride in having helped the nation’s premier corporations and institutions develop signature buildings and customized tenant improvements throughout California.

Hathaway Dinwiddie’s leadership in the California construction industry is built upon a belief that the professionalism and dedication of our employees, combined with the integrity of our client and design partner relationships, will continue to be the cornerstone of our success.

This belief has engendered a management style that integrates client focus, innovative thinking, teamwork and leadership to deliver better projects.

Current Projects in Los Angeles (clockwise, from top to bottom):
[Academy Square Development](#)
[Epic, 5901 Sunset](#)
[Vermont Corridor \(LA County DMHS Headquarters\)](#)
[Los Angeles Coliseum Renovation](#)



WOMEN IN CONSTRUCTION & DESIGN



LISA SACHS

Managing Principal
Cumming

For over 25 years, Lisa Sachs was a key contributor to the success of two of the largest multi-billion-dollar educational construction management bond programs in California as managing principal of Cumming, an international construction management firm. Her commanding role on these programs influenced the quality of the built environment and improved the level of contract performance by both design and construction professionals based on shared lessons learned and industry best practices.

Currently, Sachs serves on the Construction Management Advisory Councils for two institutions in Southern California, the New School of Architecture & Design in San Diego and Cal State University Northridge. She has also guest lectured at these institutions as well as at the University of Southern California and Woodbury University Schools of Architecture, expanding awareness of the CM profession. As an educator, mentor and lecturer she strives to bridge the gap between the architectural, engineering and construction professions by improving communications and clarifying each other's goals and objectives to further the construction management profession.

She has authored several books on construction management including, "What is Your Construction Management IQ." Recently she coauthored "What is Your Construction Management EQ?" And in 2019 in collaboration with the CMAA College of Fellows, expects to complete the trilogy with the release of a CM Career Guide entitled, "What is your Construction Management VQ (Value Quotient)?"

She is a graduate of the Rhode Island School of Design, a Fellow of the American Institute of Architects (AIA) and a Fellow of the Construction Management Association of America (CMAA), and a Certified Construction Manager (CCM). She is a past president of the CMAA Southern California Chapter and Chapter Foundation, and in 2014 was appointed by CMAA as its first ABET (Accreditation Board for Engineering and Technology) commissioner representing construction management in the applied and natural sciences.



Congratulations to Nataline Lomedico,
Giroux Glass, Inc., CEO and President

Provider of quality glazing in Los Angeles and beyond since 1946, Giroux Glass has been led by women successfully since 1991. Nataline has held her current role since 2015, succeeding previous CEO, and current Chairman of the Board, Anne-Merelie Murrell.



Giroux Glass is a specialty glazing and architectural metal subcontractor, handling the most complex projects in commercial, service, tenant improvements, and high-end residential markets.

girouxglass.com

CA 630124 NV 0044805 AZ 141159 NM 370792



Kasie Bowden
Project Superintendent
HENSEL PHELPS
Plan. Build. Manage.

Congratulations
to one of our own,
KASIE BOWDEN,
on being named one of the
Most Outstanding Women in Construction!



HENSEL PHELPS
Plan. Build. Manage.

WOMEN IN CONSTRUCTION & DESIGN



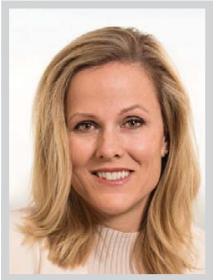
LAURIE STONE

Associate Senior Vice President of Real Estate & Asset Management
USC

Laurie Stone was named associate senior vice president for real estate and asset management for the University of Southern California (USC) in September of 2013. She is responsible for the oversight and management of a wide variety of real estate matters, including the acquisition and sale of university property, negotiation and management of university leases, negotiation and oversight of ground lease agreements with third-party developers, management of all tenant-occupied properties owned by the university, land use master planning and entitlements, management of the faculty-staff housing assistance programs, property tax payments, exemptions and appeals, and the management of title to certain non-real estate assets.

Stone and her staff also work with the office of planned giving and restricted fund accounting to document the acceptance of gifts to the university and to manage the disposition of all gifted real estate and gifts-in-kind.

Stone originally joined the university in 2006 as university counsel and program director for capital construction development before joining the real estate department in 2010. From 2010 to 2013 she served as executive director for real estate and asset management. Prior to joining USC, Stone was an associate with the law firm of Latham & Watkins from 1997 to 2006, where she specialized in land use and environmental law. She earned a bachelor's degree in English literature and a master's degree in construction management from USC, and graduated magna cum laude from Pepperdine School of Law.



CATHY ORQUIOLA

Vice President and District Manager
PCL Construction

As Vice President for PCL Construction's thriving \$1 billion Los Angeles district, Cathy Orquiola only knows one mode: "Go!" A self-proclaimed ultimate competitor, she is determined to achieve success – for her people, her firm, and her clients. Whether constructing a building or leading a district, Orquiola recognizes that people are the key distinguishing factors in every accomplishment. As such, she not only sees her position as a builder of structures, but primarily as a builder of people – a role she has honed throughout her 22 years in the industry, beginning as a project engineer and rising through the ranks to become vice president and operations manager for an international construction firm. Throughout, she has led operations and office teams to find the best way – whether building a ground up casino in nine months or driving a culture of innovation that actively embraces new technology and Lean practices. She is also the first female executive to have been promoted to Vice President at PCL.



MICHELLE SMITH-BALLARD

Vice President, Community and Citizenship
Turner Construction

Michelle Ballard ensures Turner is connected to the community by fostering organizational partnerships, tracking local hire and minority, women or disadvantaged business requirements, and connecting clients to community influencers needed to make projects successful. She joined Turner in Southern California in 1988, serving as a field accountant and working with the Western Financial Center until 1999 when she left the company. She returned to Turner in 2008 as the director of community affairs for Southern California. In 2016, she was named regional director of community and citizenship for the Southwest, her current role for which she has been promoted to Vice President.



LIA TATEVOSIAN

Vice President, Operations Manager
Swinerton

Lia Tatevosian is currently Vice President, Operations Manager for Swinerton, with oversight of the Aviation, Civic, Special Projects, Seismic/Adaptive Reuse and Entertainment markets for Swinerton's Orange County and Los Angeles Division. She is responsible for an annual revenue of \$550 million and 550 employees and growing. Tatevosian is a 22-year veteran with Swinerton, having started her career with the company as a Project Engineer in 1996 and working her way up through project management and estimating. Prior to working for Swinerton, she spent two years as a Junior Estimator working for an LA general contractor.



JESSICA ZELEDON

Project Manager
W.E. O'Neil

With over ten years of experience in the construction industry, Jessica Zeledon's skills in coordination, attention to detail and demands for quality have propelled her up the ranks of W.E. O'Neil as a well-respected team leader. Zeledon has grown personally and professionally over her time with W.E. O'Neil. Her eagerness and hunger for growth provided the springboard for her leap into project management. Zeledon's dedication, tenacity, and willingness to mentor are second to none. As a project manager, she coordinates all preconstruction and construction activities throughout the project and is in constant communication with the Owner and Architect. She is responsible for the total on-site management of a project and supervision of field staff. When she is not managing the intricacies of a fast-paced project, she dedicates her time to rescuing dogs with disabilities who have no home and enjoys investing her time in multiple properties as an owner/landlord.

WOMEN IN CONSTRUCTION & DESIGN

Women in the Construction Industry: Room for Growth

According to labor force statistics from the Current Population Survey and analyzed by the National Association of Home Builders (NAHB), the share of women in the construction industry is currently at nine percent, although women make up almost half—47 percent—of the total working population. While female construction employment slowly picked up to around 970,000 in 2017 after the Great Recession, it is still below the pre-recession level of 1.1 million in 2007.

offer them,” said Judy Dinelle, CAPS, CGP, chair of the NAHB PWB Council and building ambassador of 84 Lumber in Asheville, N.C., serving as the company’s liaison to home building associations. “We need to help the public, guidance counselors and parents understand that the industry provides a high income, significant work values, job security and a sense of accomplishment.”

One of the ways PWB members hope to accomplish introducing more females to the industry is to create more pre-apprenticeship

‘Right now more than ever is the time for our industry to not only increase our recruitment efforts, but to also change the way we talk about careers in home building.’

In September of last year, members of NAHB are calling for an increase in recruiting efforts to attract women to the home building industry. As the residential construction industry continues to grapple with a severe labor shortage, PWB members say bringing additional women into the construction labor force represents a potential opportunity for the future.

“Right now more than ever is the time for our industry to not only increase our recruitment efforts, but to also change the way we talk about careers in home building to show women this industry has so much to

programs throughout the country and develop leadership paths within their organizations.

“We’ve seen examples of pre-apprenticeship programs that are really quite successful, so we need to replicate those programs and implement them into more communities across the country,” said Dinelle. “We should all promote and offer to help the programs and organizations that provide training for women. It’s our responsibility to put our words into action.”

For more information on the NAHB PWB Council, visit nabh.org.

